



Emission Solutions

RETROFIT SOLUTION.

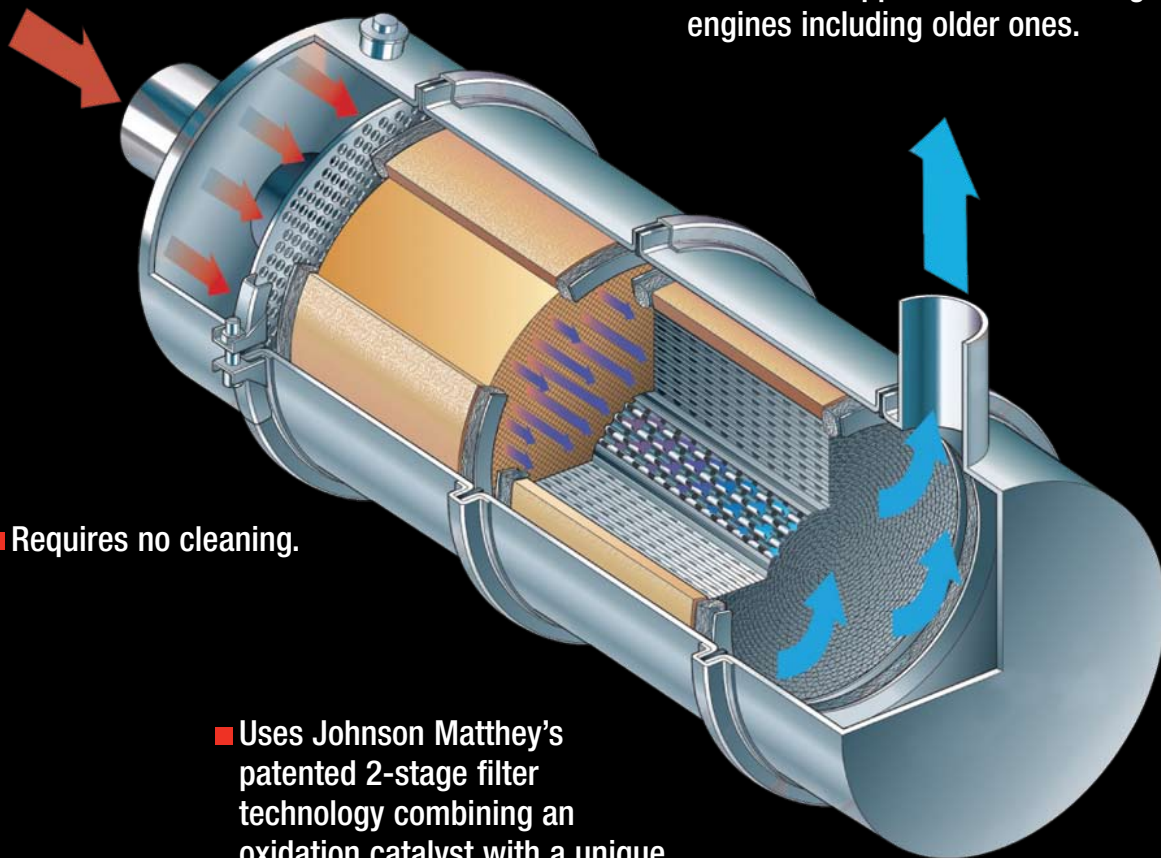
PCRT₂[®]

■ Requires no monitoring.

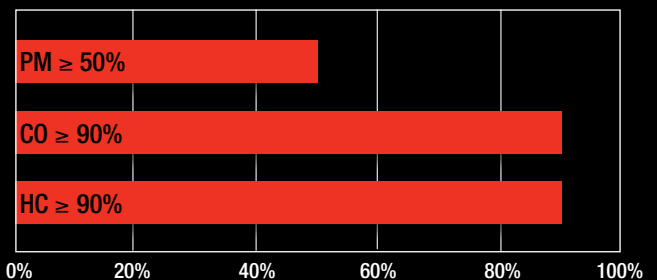
■ Delivers PM reductions of at least 50% and can be applied to a wide range of engines including older ones.

■ Requires no cleaning.

■ Uses Johnson Matthey's patented 2-stage filter technology combining an oxidation catalyst with a unique filter.



PCRT reduces:*



* Actual reductions depend on engine emissions and duty cycle. Verification credits may vary.

Every Solution.

Cummins Emission Solutions (CES) is a leader in emissions reduction. With over 2 million units in service today, we deliver products that work through our legacy of technology, our 30 years experience in exhaust engineering and manufacturing and our partnerships with the best suppliers of emission control components in the market today.

Technology for a wide range of engines.

The CES Partial Continuously Regenerating Technology (PCRT₂[®]) uses Johnson Matthey's patented technology for reducing PM, CO and HC. The product provides the solution for older, dirtier engines. It delivers Particulate Matter (PM) reductions of at least 50% depending on the application. The PCRT₂ can be used on all engine makes and model years up to 600 hp*. The system also reduces HC and CO by at least 90%. This technology can be applied to engines where a passive filter cannot be used or where routine maintenance is difficult.

Engineered for Performance.

Based on patented 2-stage filter technology, the PCRT₂ combines an oxidation catalyst with a unique partial filter. This combination provides the attributes of both a flow-through substrate and a wall-flow filter. This technology helps to achieve significant PM reduction while minimizing filter plugging. With the flow-through design, exhaust can flow without significant increases in engine back pressure. Since the filter does not accumulate significant amounts of lube oil ash, the need for periodic filter cleaning is eliminated in properly maintained engines.

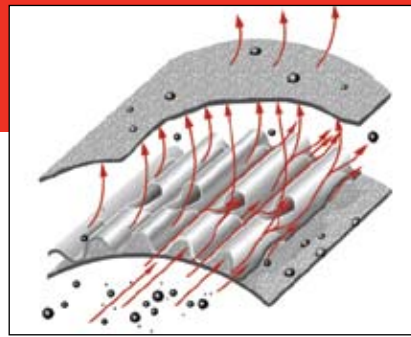
The PCRT₂ has a durable stainless steel housing and the compact design is easily integrated within most applications without reducing fuel economy. The product is conditionally verified by EPA for model years 1988 - 1993.

The PCRT₂ is engineered to:

- Replace the existing muffler
- Reduce odors and provide clean operation

* Engines above 450 hp may require dual technology.

Cummins Emission Solutions and Cummins Filtration products are covered by performance and emissions warranties that meet or exceed warranty requirements for retrofit verification coverage.



The unique filter technology combines the attributes of a flow-through substrate and a wall-flow filter and requires no cleaning in properly maintained engines.

- Provide "Fit and Forget" convenience with little or no cleaning required
- Eliminate the need for monitoring
- Offer Cummins Emission Solutions dependability

Technology that Works.

Emission Reduction	PM _≥ 50%; CO _≥ 90%; HC _≥ 90%
Fuel Requirement	≤15 ppm
Exhaust Temperature Requirement	≥240°C at least 40% of operating time
Engine Requirements	– Properly maintained – Non-EGR – NO _x /PM ratio of ≥20
Oil	No inorganic fuel or oil additives
Engine types	All makes & models up to 600 hp

Applications.

- Over the road trucks
- Port equipment
- Marine
- School Buses
- Sanitation Trucks
- Private Fleets
- Construction equipment
- Refuse trucks
- Material Handling
- Urban Transit Buses
- Municipal Vehicles

Connect to a World of Diesel Expertise.

Cummins Emission Solutions provides technologies to protect your equipment and keep it running clean and strong. Supported by the Cummins North American distributor network and Cummins worldwide, our systems bring real value to you – from installation through the life of the product. Choose the emission-reduction leader backed by the Cummins' legacy of technology for your complete equipment needs. Choose Cummins Emission Solutions.



Cummins Inc.
Box 3005
Columbus, IN 47202-3005
U.S.A.

Phone: 1-800-DIESELS
Fax: 1-800-232-6393

Internet: www.cummins.com

Bulletin 4973763 Printed in U.S.A. 11/07
©2007 Cummins Inc.